

MAKE THE
WORLD SEE

Milestone Systems

XProtect® Input Unit Plug-ins for AXIS T8310 Controller

Getting started guide

XProtect Smart Client



Contents

Copyright, trademarks, and disclaimer	3
Introduction	4
Axis T8310 and XProtect Smart Client	5
Install Axis T8310	5
Install the XProtect Input Unit Plug-in	5
Configure XProtect Input Unit Plug-in	7
Configurable actions	8
Example – use a shortcut key to view video from a camera	9
Example – use a shortcut key to start recording	9
Profile settings	10
Device settings	10
Joystick settings	10
Default settings for devices and action mappings	11

Copyright, trademarks, and disclaimer

Copyright © 2025 Milestone Systems A/S

Trademarks

XProtect is a registered trademark of Milestone Systems A/S.

Microsoft and Windows are registered trademarks of Microsoft Corporation. App Store is a service mark of Apple Inc. Android is a trademark of Google Inc.

All other trademarks mentioned in this document are trademarks of their respective owners.

Disclaimer

This text is intended for general information purposes only, and due care has been taken in its preparation.

Any risk arising from the use of this information rests with the recipient, and nothing herein should be construed as constituting any kind of warranty.

Milestone Systems A/S reserves the right to make adjustments without prior notification.

All names of people and organizations used in the examples in this text are fictitious. Any resemblance to any actual organization or person, living or dead, is purely coincidental and unintended.

This product may make use of third-party software for which specific terms and conditions may apply. When that is the case, you can find more information in the file `3rd_party_software_terms_and_conditions.txt` located in your Milestone system installation folder.

Introduction

This document describes how to install the XProtect Input Unit Plug-in for the Axis T8310 Video Surveillance Control Board in XProtect Smart Client. This document assumes that you know how to operate the Axis T8310 Video Surveillance Control Board - in the rest of this document referred to as "Axis T8310".

A full description of the Axis T8310 is available in a document titled *ug_T81series_38417_en_1002.pdf*, which installs on your computer when you install the XProtect Input Unit Plug-in.

Axis T8310 and XProtect Smart Client

The Axis T8310 lets you view and control cameras and video recorders at local and remote facilities.

The XProtect Input Unit Plug-in for the Axis T8310 lets you use an Axis T8310 to perform tasks in XProtect Smart Client.

There is no one-to-one mapping of Axis T8310 functions to XProtect Smart Client functions and vice versa. Some Axis T8310 functionality is not applicable for XProtect Smart Client, and XProtect Smart Client contains functionality not implemented in Axis T8310.

Install Axis T8310

Axis T8310 consists of a joystick, a keypad, and a jog dial. You can install these separately, or as one unit. The units are powered through the USB connection.

To install Axis T8310, connect Axis T8310 to the USB port on your PC.

Install the XProtect Input Unit Plug-in

You must have XProtect Smart Client version 2016 or later installed. The XProtect Input Unit Plug-in does not support previous versions.

The XProtect Input Unit Plug-in for Axis T8310 comes with an installer. To install the plugin, do the following:

1. To download the installer for the XProtect Input Unit Plug-in, go to <https://www.milestonesys.com/download/>.
2. In the **Product** list, select XProtect Input Unit Plug-ins and download the appropriate installer for your computer.



The XProtect Input Unit Plug-ins for Axis T8310 and Axis TU9001 share the same .exe file.

3. Double-click the .exe file to start the installation.

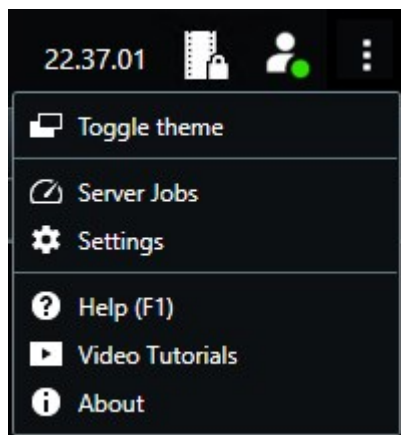


4. To install the XProtect Input Unit Plug-in, accept the terms of the license agreement and then click **Install**.
5. When the installation is complete, click **Finish**.

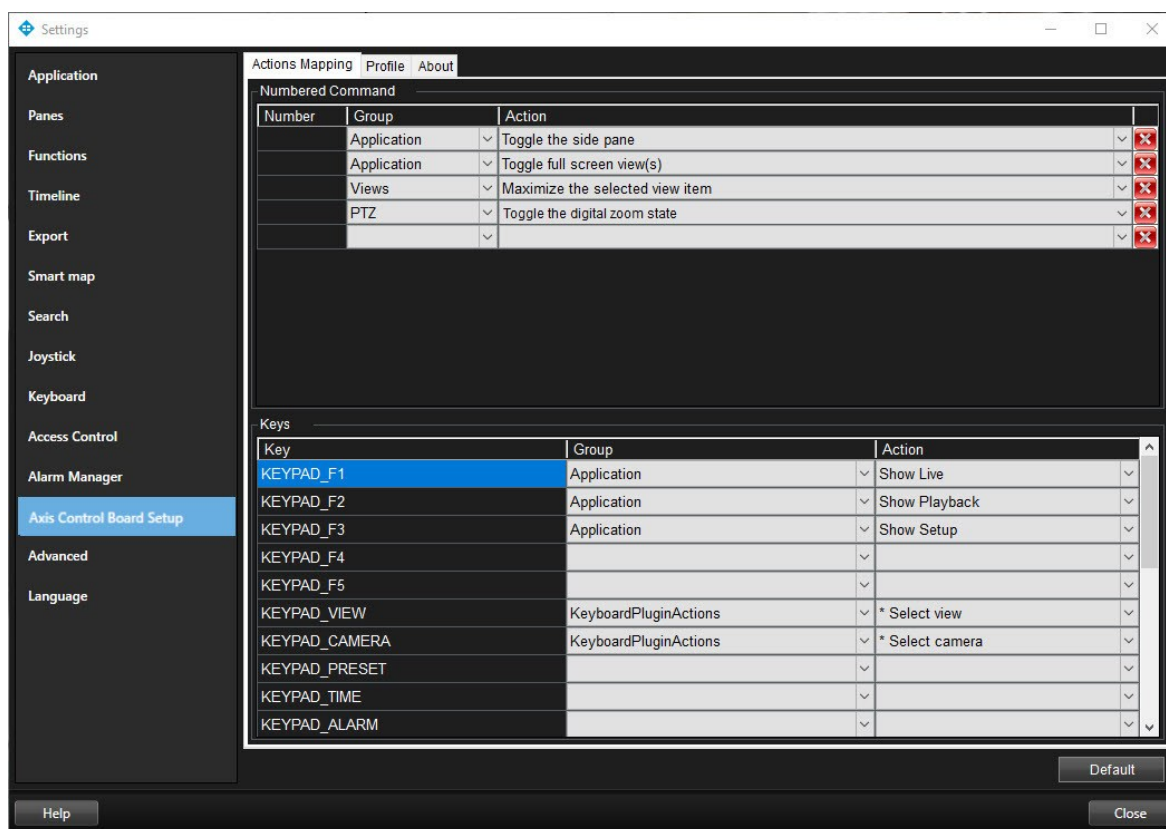
Configure XProtect Input Unit Plug-in

To configure the XProtect Input Unit Plug-in in XProtect Smart Client, follow these steps:

1. Start XProtect Smart Client, and select **Settings** in the upper right corner.



2. In the **Settings** window, select **Axis Control Board Setup**.

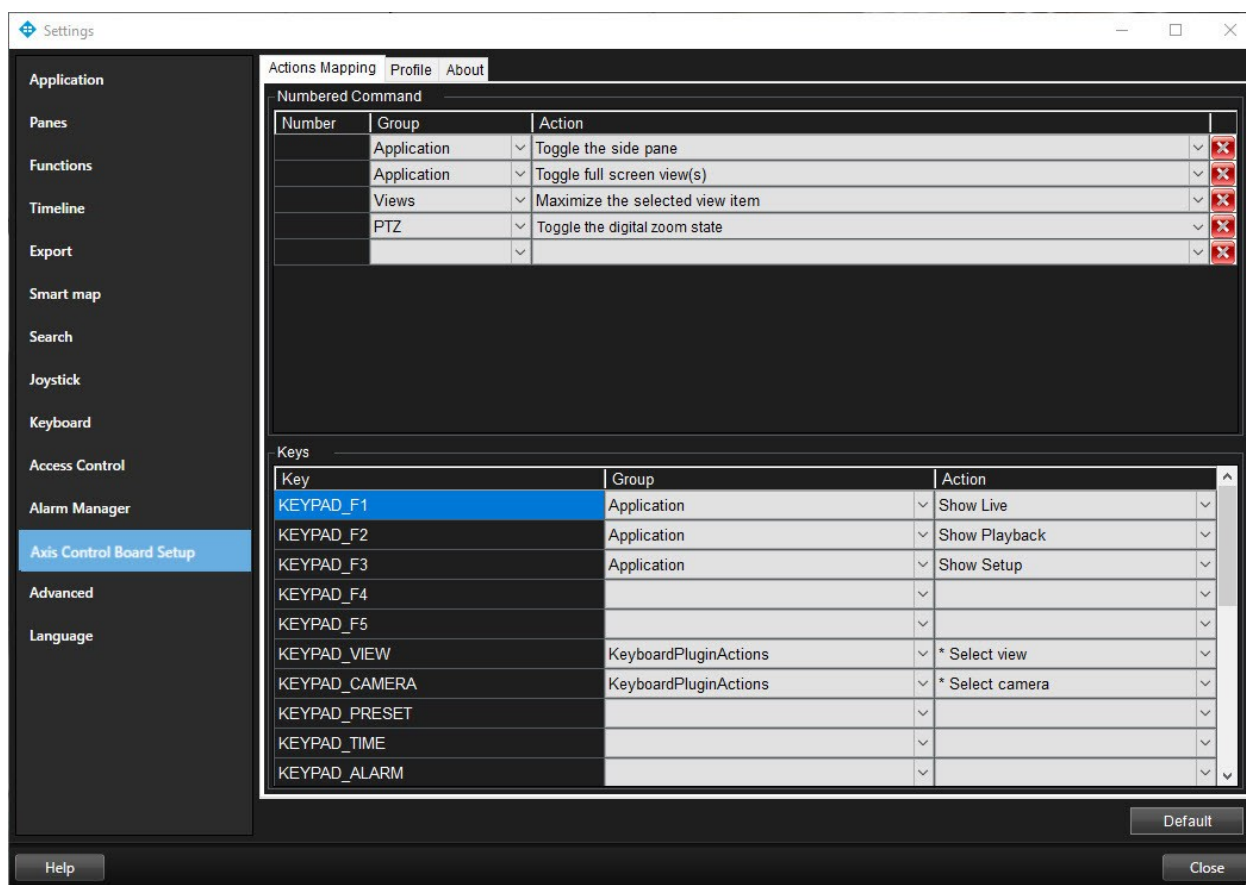


Configurable actions

The XProtect Input Unit Plug-in lets you map keys on the Axis T8310 to actions, or tasks, in XProtect Smart Client. You can map actions to numbers, or to specific keys such as **ALT** or **9**.

For example, you might want to select a specific camera when you press the **ALT** key, or switch to a different view when you press the number **9**.

Configure combinations of numbers or keys and actions on the **Actions Mapping** tab.



The tab contains two groups. Map actions in each group as follows:

- **Numbered Command** - map actions to numbers
- **Keys** - map actions to specific keys on the keyboard

For each number or key:

- In the **Group** list, specify where to apply the action. For example, if you select Views you can select an action that is useful when you need to do something in a view. This might be when you want to go to the next view
- In the **Action** list, select the outcome of the action. The actions that are available differ, depending on the Group you selected

You can map both a number and a key to the same action.

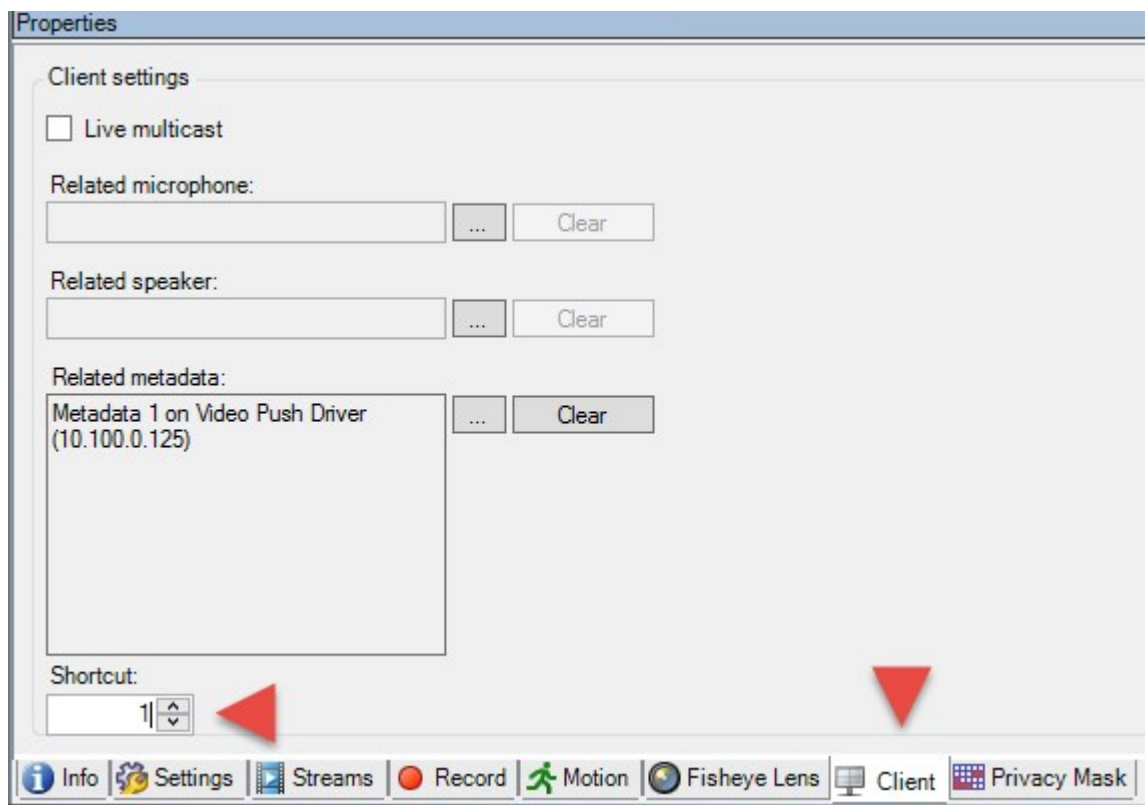
After you map keys or buttons to actions, you can use them in XProtect Smart Client.

- Numbered commands - enter the number and then press **ALT** on the Axis T8310
- Keys - press the key on the Axis T8310

Example - use a shortcut key to view video from a camera

You can quickly view video from a camera by mapping the camera's shortcut key to the **Select camera** action.

1. In XProtect Management Client, select the camera, click the **Client** tab, and then make sure that a shortcut is defined in the **Shortcut** field.



2. In XProtect Smart Client, in the **Settings** window, select a key. Then, in the **Group** list, select **KeyboardPluginActions**. In the **Action** list, click **Select camera**.

By default, this action uses the **KEYPAD_CAMERA** key.

3. To apply the action, enter the camera's shortcut number followed by **KEYPAD_CAMERA**.

Example - use a shortcut key to start recording

When you are viewing live footage from a camera, you can use a shortcut number or a specific key to start recording.

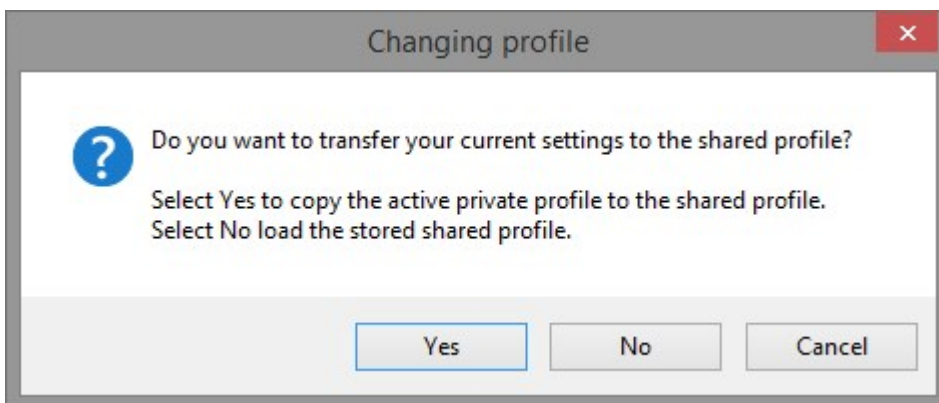
1. To create an action that starts recording, do one of the following:
 - In the **Numbered Command** group, in the **Number** field, enter a number
 - In the **Keys** group, select a key
2. In the **Group** list, select **Camera**.
3. In the **Action** list, select **Start recording on selected camera**.
4. To apply the action, select the view that contains the camera, and then enter the action's number followed by **ALT**.

Profile settings

The current setting is stored privately on the server, but you can transfer it to the shared profile. The settings then apply to everyone who uses this profile.



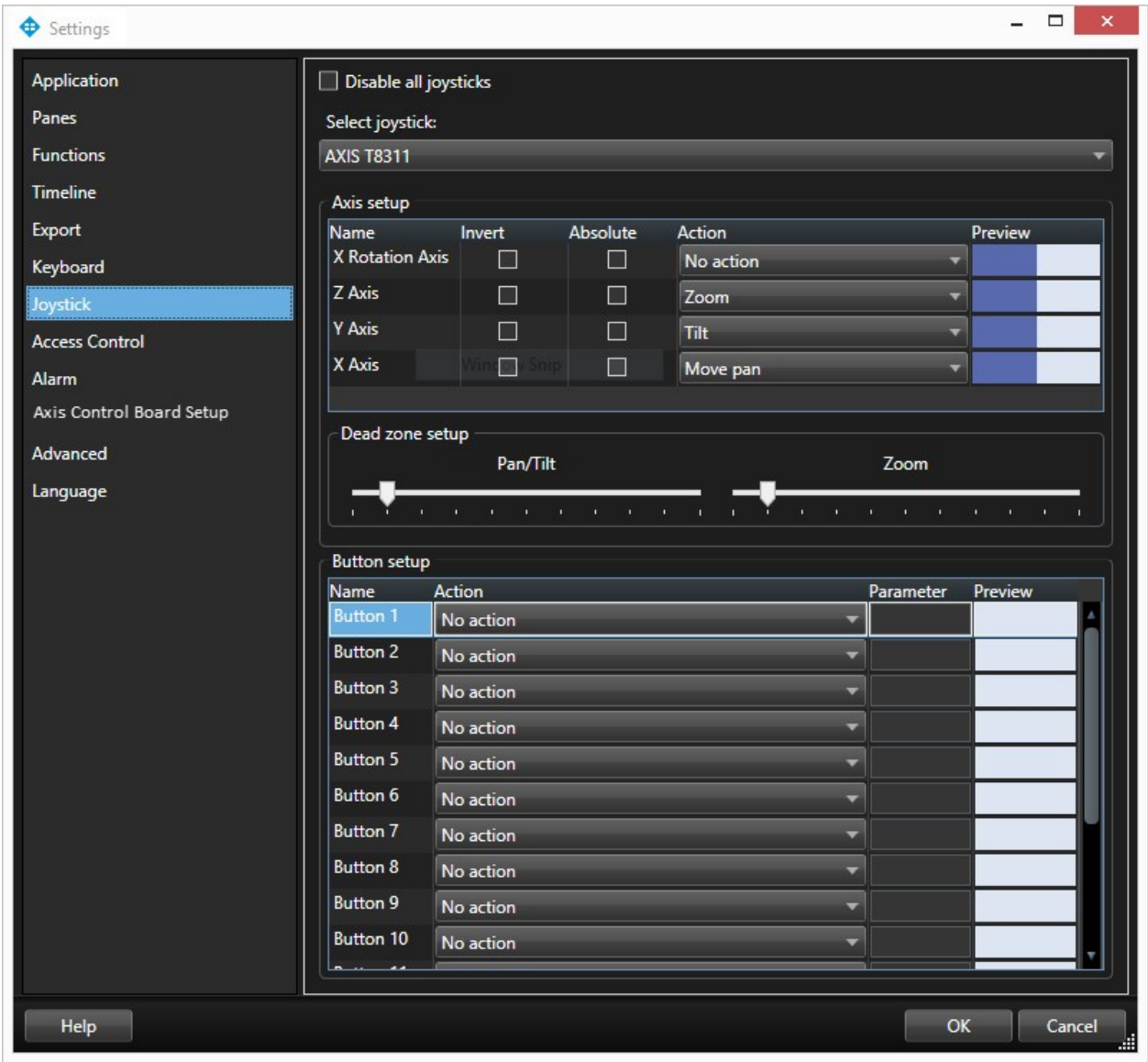
A message displays if you change a profile. For example, changing a profile from **Private** to **Shared**.



Device settings

Joystick settings

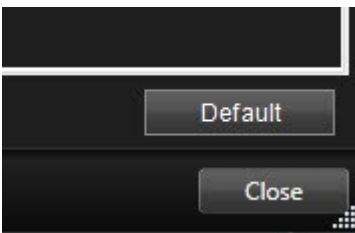
To set up the joystick, use the options for **Joystick** in XProtect Smart Client.



For more information, press F1 and then search for **Joystick options**.

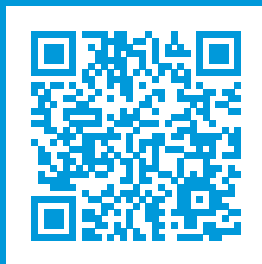
Default settings for devices and action mappings

You can restore the default settings for a profile by clicking the **Default**. This restores default settings for devices and action mappings.



The following image shows the default action mappings.

Key	Group	Action
KEYPAD_F1	Application	Show Live
KEYPAD_F2	Application	Show Playback
KEYPAD_F3	Application	Show Setup
KEYPAD_F4		
KEYPAD_F5		
KEYPAD_VIEW	KeyboardPluginActions	* Select view
KEYPAD_CAMERA	KeyboardPluginActions	* Select camera
KEYPAD_PRESET		
KEYPAD_TIME		
KEYPAD_ALARM		
KEYPAD_TAB		
KEYPAD_ALT	KeyboardPluginActions	* Generic command number
JOGDIAL_L		
JOGDIAL_BOOKMARK		
JOGDIAL_PREVIOUS	Views	Move view item selection down
JOGDIAL_PLAY_PAUSE	KeyboardPluginActions	* Play/Pause
JOGDIAL_NEXT	Views	Move view item selection up
JOGDIAL_R		
JOGDIAL_SHUTTLE_FORWARD	KeyboardPluginActions	* Playback forward
JOGDIAL_SHUTTLE_REVERSE	KeyboardPluginActions	* Playback reverse
JOGDIAL_SHUTTLE_STOP	KeyboardPluginActions	* Play/Pause
JOGDIAL_JOG_PLUS	Time navigation	Next image
JOGDIAL_JOG_MINUS	Time navigation	Previous image



helpfeedback@milestone.dk

About Milestone

Milestone Systems is a leading provider of open platform video management software; technology that helps the world see how to ensure safety, protect assets and increase business efficiency. Milestone Systems enables an open platform community that drives collaboration and innovation in the development and use of network video technology, with reliable and scalable solutions that are proven in more than 150,000 sites worldwide. Founded in 1998, Milestone Systems is a stand-alone company in the Canon Group. For more information, visit <https://www.milestonesys.com/>.

